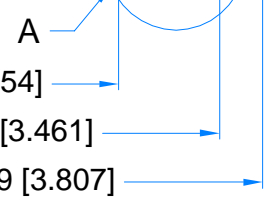
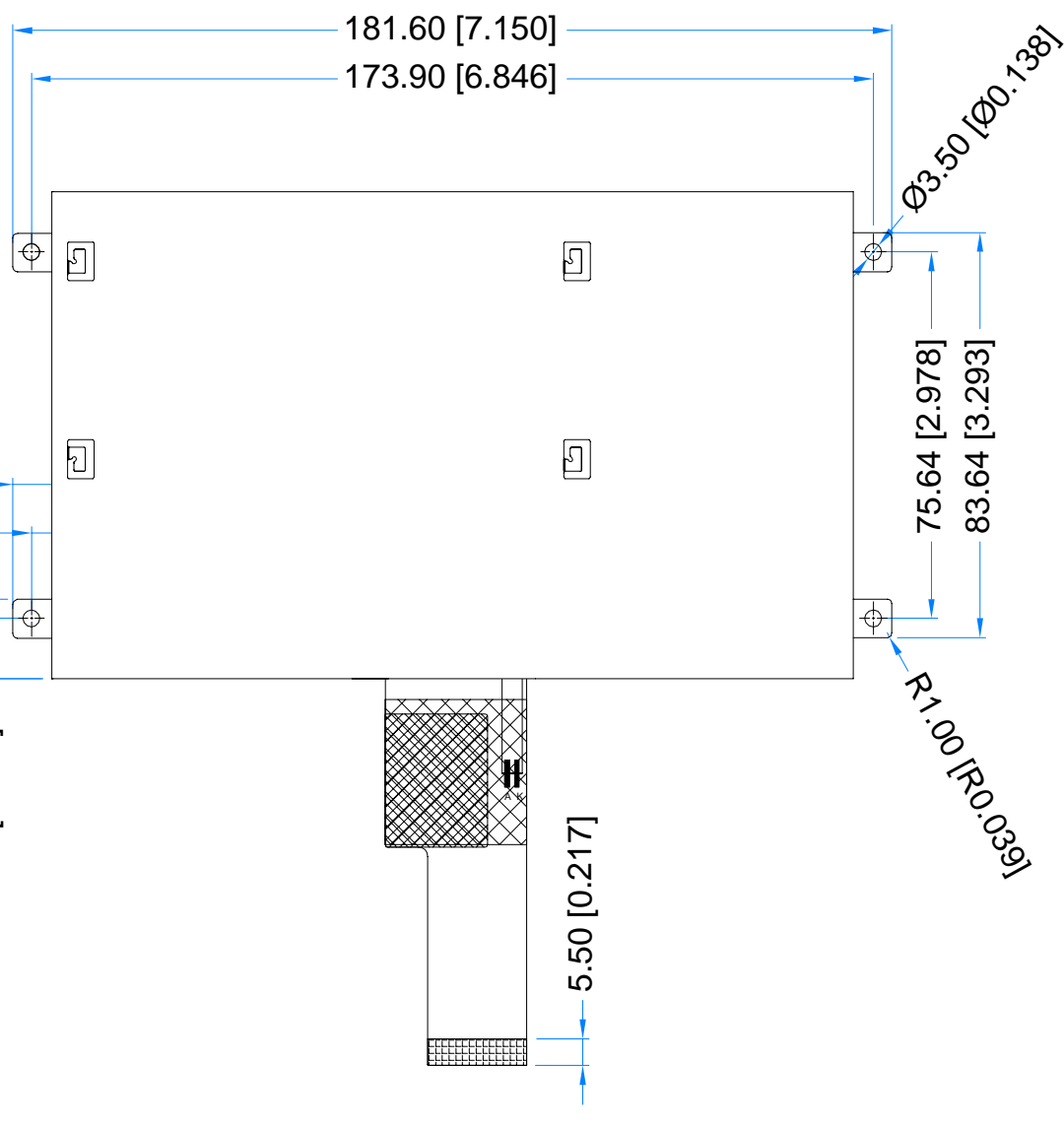
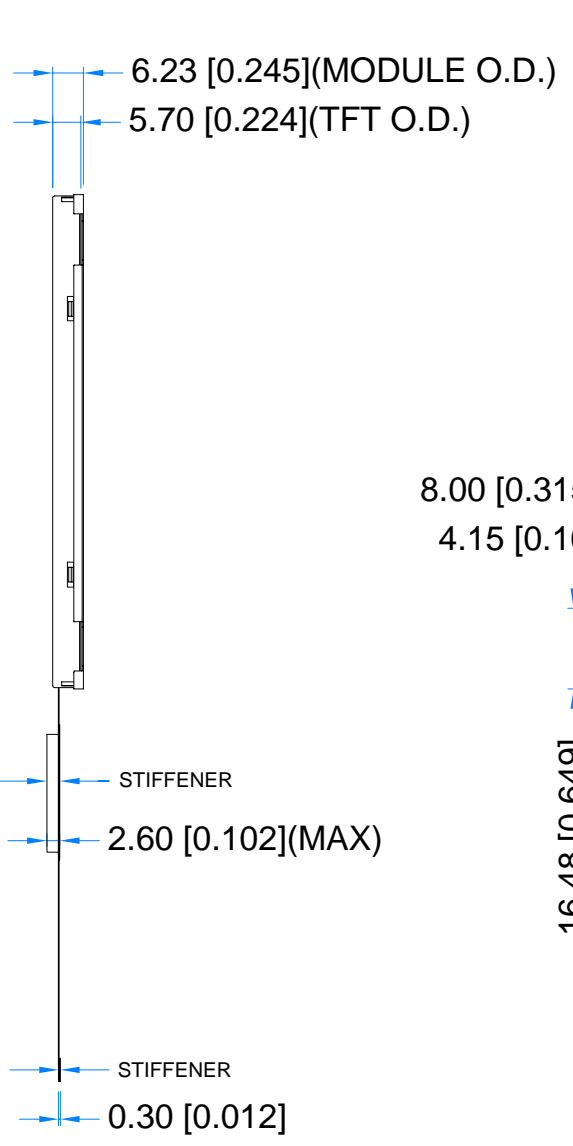
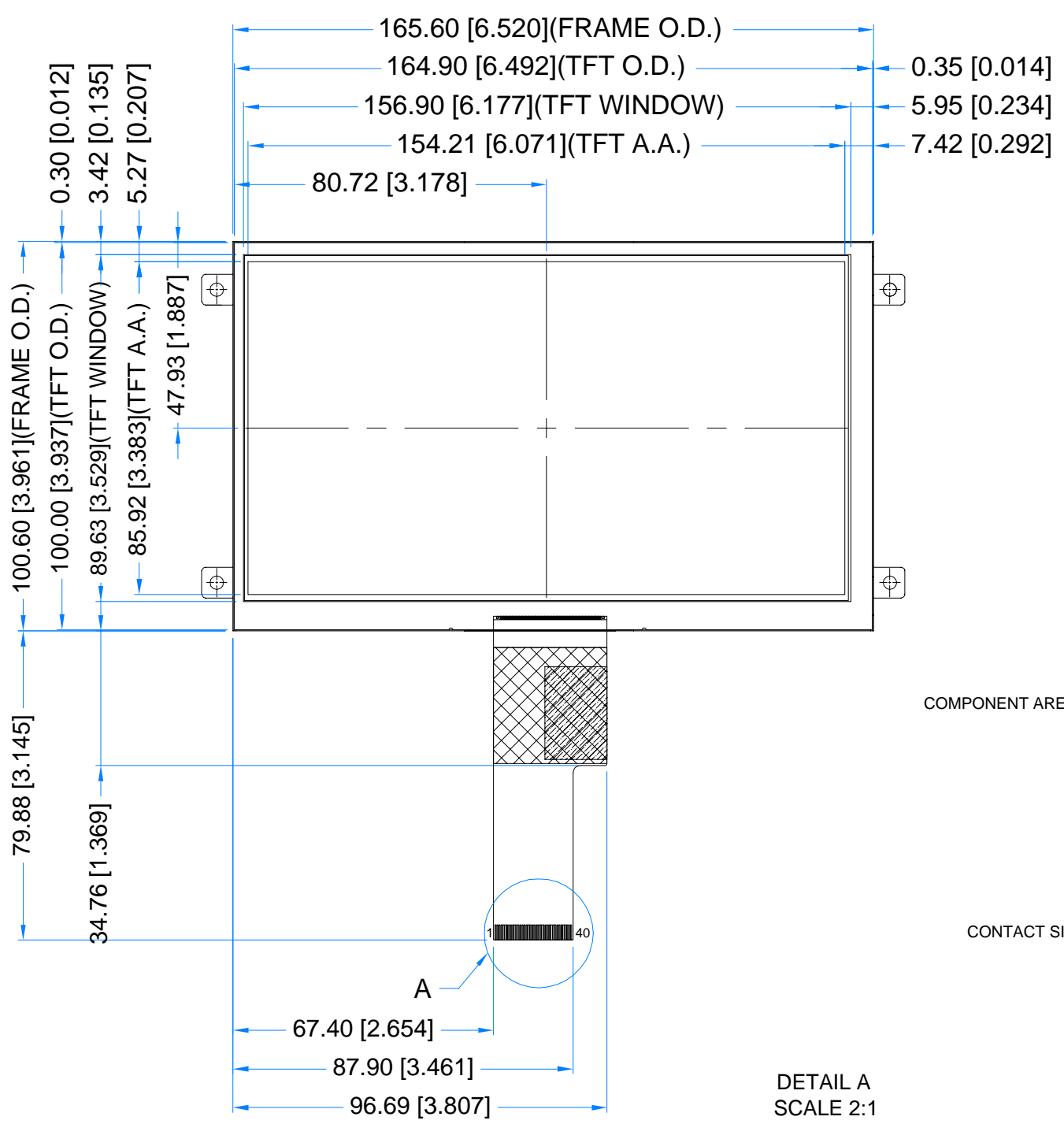
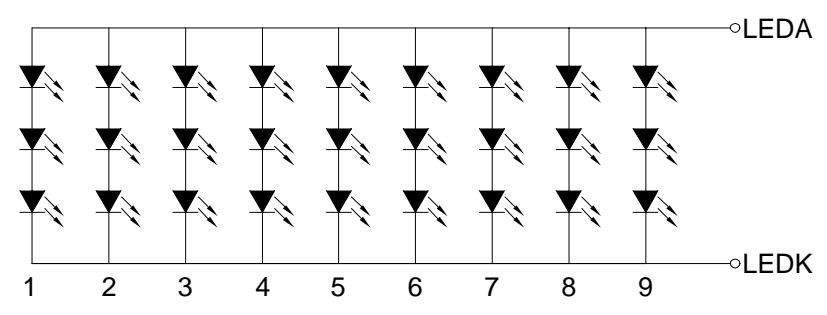
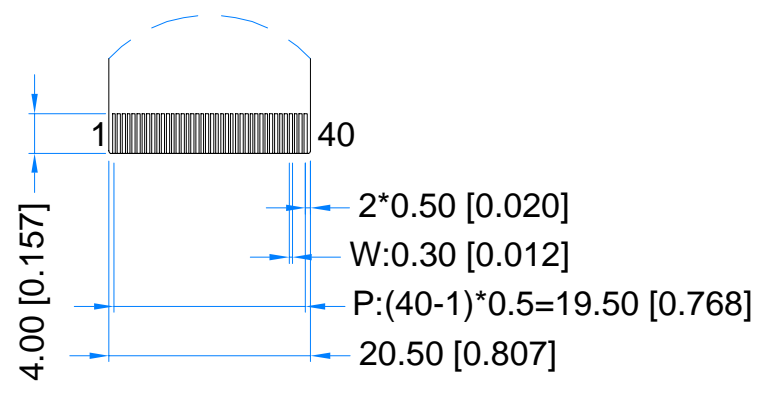


Revision:	Changes:	Date:
1.0	Initial Case	2021.04.19



DETAIL A
SCALE 2:1



LED Diagram Circuit

PINOUT ON THE 2ND PAGE

TFT NOTES:
1. LCD TYPE: TRANSMISSIVE, NORMALLY BLACK, IPS
2. RESOLUTION: 1024x600
3. VIEWING ANGLE: FREE
4. IC CONTROLLER: EK79007AD3+EK73217BCGA
5. OPERATING VOLTAGE: 3.3V
6. INTERFACE: MIPI
7. BACKLIGHT: 27 LEDS WHITE, Vf = 9.6V, If = 270mA

GENERAL NOTES:
1. MODULE SURFACE LUMINANCE: 1000 cd/m²
2. MOUNTING METAL FRAME THICKNESS: 0.30 mm
3. OPERATING TEMPERATURE: -20°C ~ 70°C
4. STORAGE TEMPERATURE: -30°C ~ 80°C
5. WITHOUT INDIVIDUAL TOLERANCE: ±0.3mm
6. RoHS3 COMPLIANT

PN: RVT70HSMFWN00			
SN:			
DRAWN: M.Natywa	2021.04.19	1:1.54	
CHECKED: Carol	2021.04.20	[mm]	
APPR:		ISO A3	



TFT CONNECTOR			
Pin No.	Desc.	Pin No.	Desc.
1	NC	21	MIPI_D3P
2	VDD	22	GND
3	VDD	23	NC
4	NC	24	NC
5	RESET	25	GND
6	STBYB	26	NC
7	GND	27	NC
8	MIPI_D0N	28	NC
9	MIPI_D0P	29	NC
10	GND	30	GND
11	MIPI_D1N	31	LED-
12	MIPI_D1P	32	LED-
13	GND	33	L/R
14	MIPI_D2N	34	U/D
15	MIPI_D2P	35	NC
16	GND	36	NC
17	MIPI_DCLKN	37	NC
18	MIPI_DCLKP	38	NC
19	GND	39	LED+
20	MIPI_D3N	40	LED+