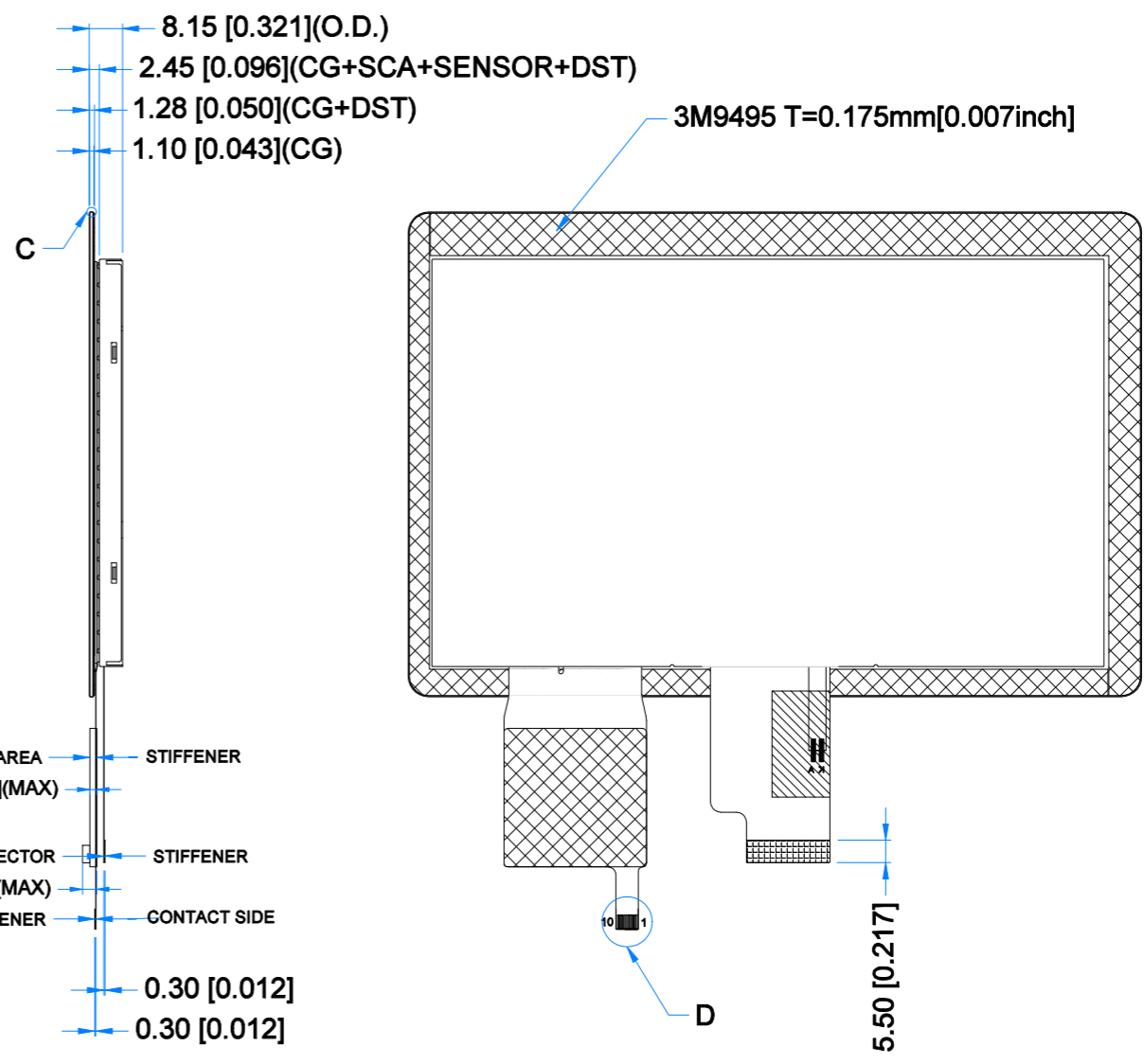
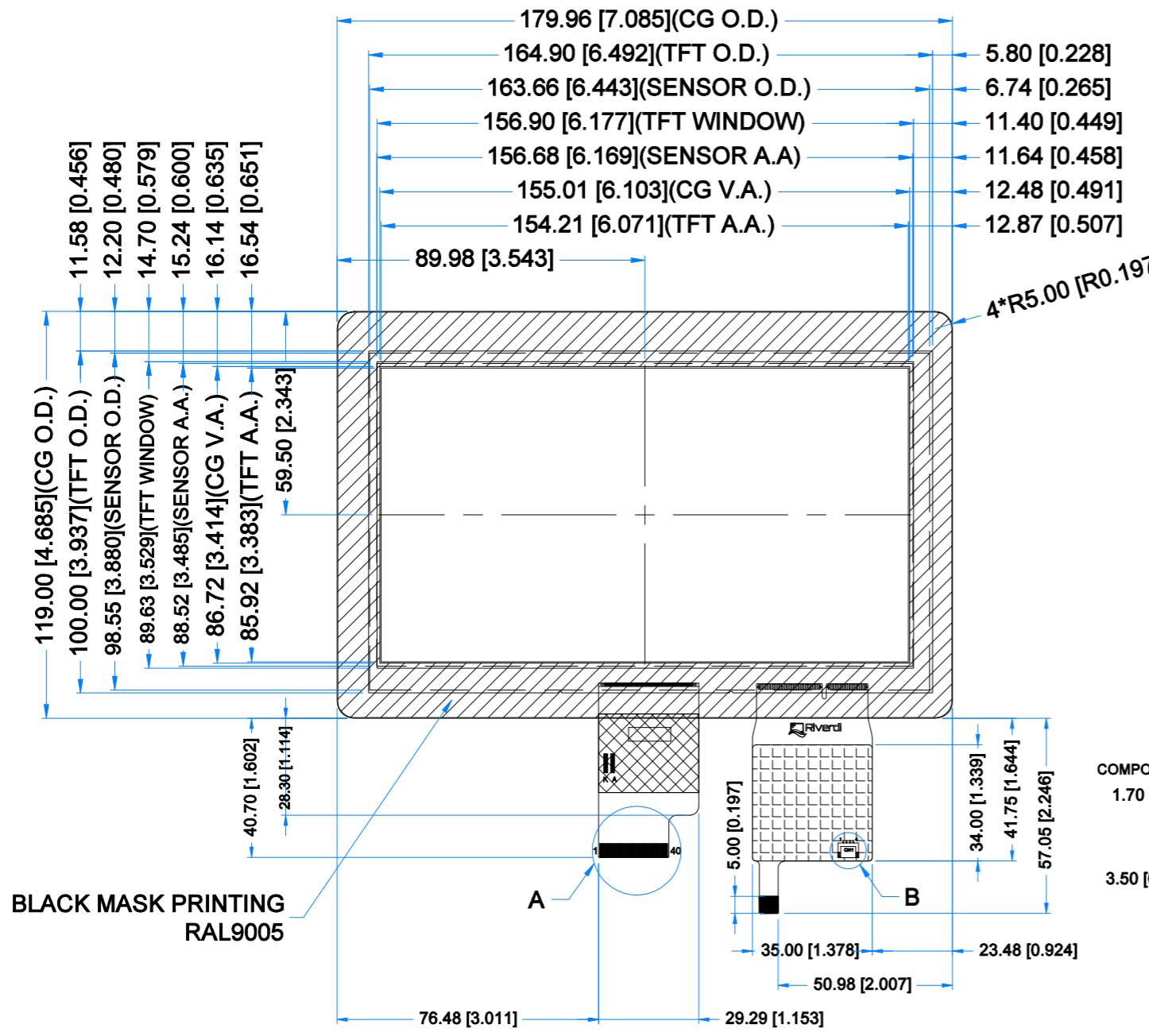
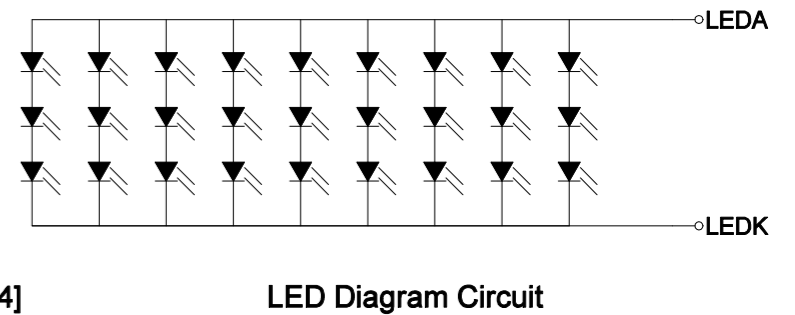
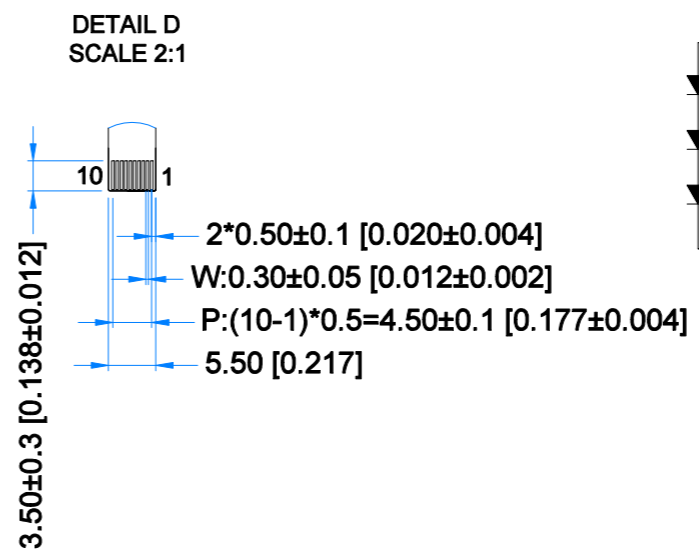
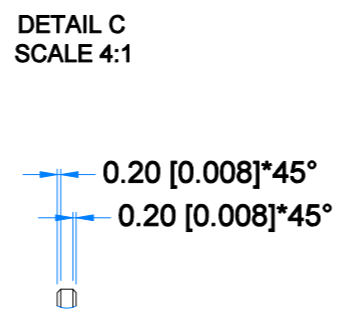
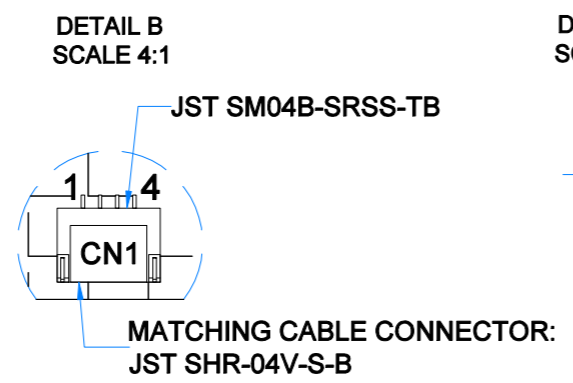
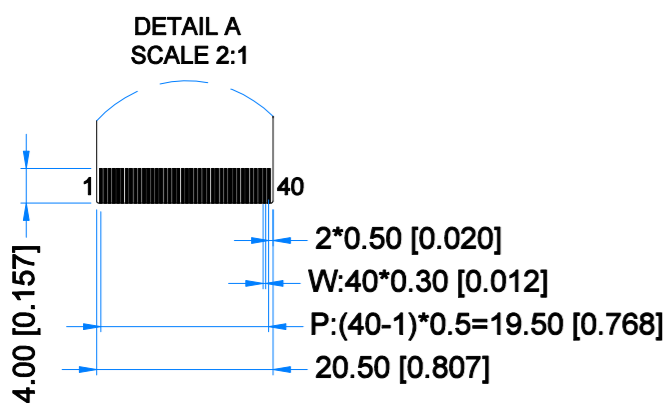


Revision:	Changes:	Date:
1.0	Initial Case	2020.07.15
1.1	Dimensions Overhaul	2021.06.24



BLACK MASK PRINTING
RAL9005



TFT NOTES:
 1. LCD TYPE: TRANSMISSIVE, NORMALLY BLACK, IPS
 2. RESOLUTION: 1024x600
 3. VIEWING ANGLE: FREE
 4. IC CONTROLLER: EK79001HK+EK73215BCGA
 5. OPERATION VOLTAGE: 3.3V
 6. BACKLIGHT: 27PCS LED, $V_f=9.6V$, $I_f=270mA$

TP NOTES:
 1. TP STRUCTURE: G+G
 2. CG THICKNESS: 1.10mm[0.043inch]
 3. DRIVER IC: ILI2132A
 4. INTERFACE: USB/I2C/OPTIONAL UART
 5. OPERATING VOLTAGE: 3.3V(CTP I2C); 5.0V(CTP USB)

GENERAL NOTES:
 1. MODULE SURFACE LUMINANCE: 800 cd/m²
 2. OPERATING TEMPERATURE: -20°C ~ 70°C
 3. STORAGE TEMPERATURE: -30°C ~ 80°C
 4. WITHOUT INDIVIDUAL TOLERANCE:
 DIM ACCORDING DIRECTLY to TFT:
 ±0.2mm[0.008inch]
 DIM ACCORDING DIRECTLY to TP:
 ±0.3mm[0.012inch]
 5. RoHS COMPLIANT

PN: RVT70HSLNWC00
 SN:
 DRAWN: M.Natywa
 CHECKED: K.Brodacka
 APPR:



2021.06.24 1:2.00
 2021.07.06 [mm]
 ISO A3 P. 1 of 1



TFT CONNECTOR			
Pin No.	Desc.	Pin No.	Desc.
1	VCOM	21	RXIN3+
2	VDD	22	GND
3	VDD	23	NC
4	NC	24	NC
5	RESET	25	GND
6	STBYB	26	NC
7	GND	27	NC
8	RXINO-	28	SELB
9	RXINO+	29	AVDD
10	GND	30	GND
11	RXIN1-	31	LED-
12	RXIN1+	32	LED-
13	GND	33	L/R
14	RXIN2-	34	U/D
15	RXIN2+	35	VGL
16	GND	36	NC
17	RXCLKIN-	37	NC
18	RXCLKIN+	38	VGH
19	GND	39	LED+
20	RXIN3-	40	LED+

TOUCH PANNEL CONNECTOR			
Pin No.	Desc.	Pin No.	Desc.
1	USB_GND	6	I2C_VDD(3.3V)
2	USB_VDD(5.0V)	7	I2C_RST
3	USB_D-	8	I2C_SCL
4	USB_D+	9	I2C_INT
5	I2C_GND	10	I2C_SDA

CN1			
Pin No.	Desc.	Pin No.	Desc.
1	USB_VDD(5.0V)	3	USB_D+
2	USB_D-	4	USB_GND