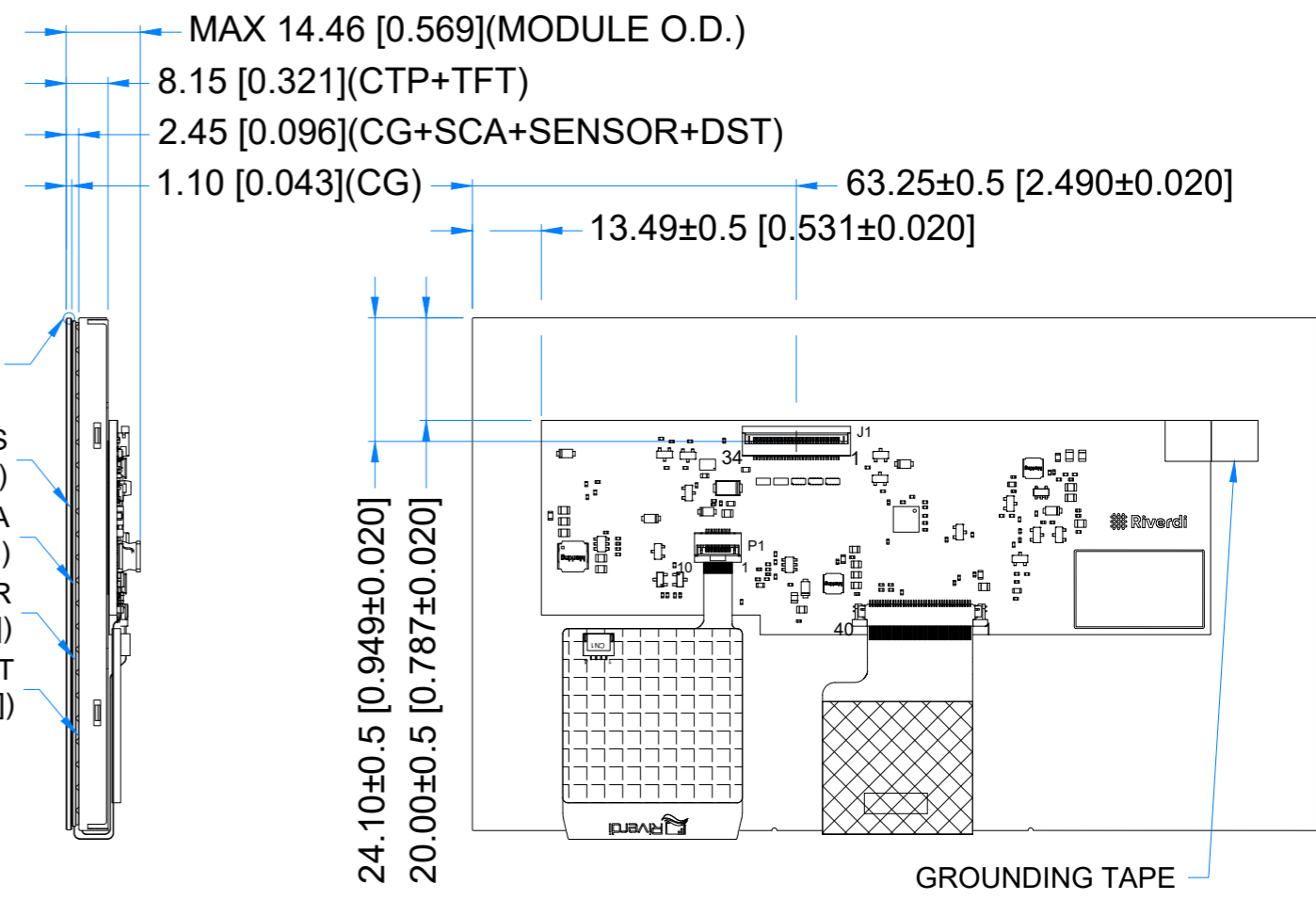
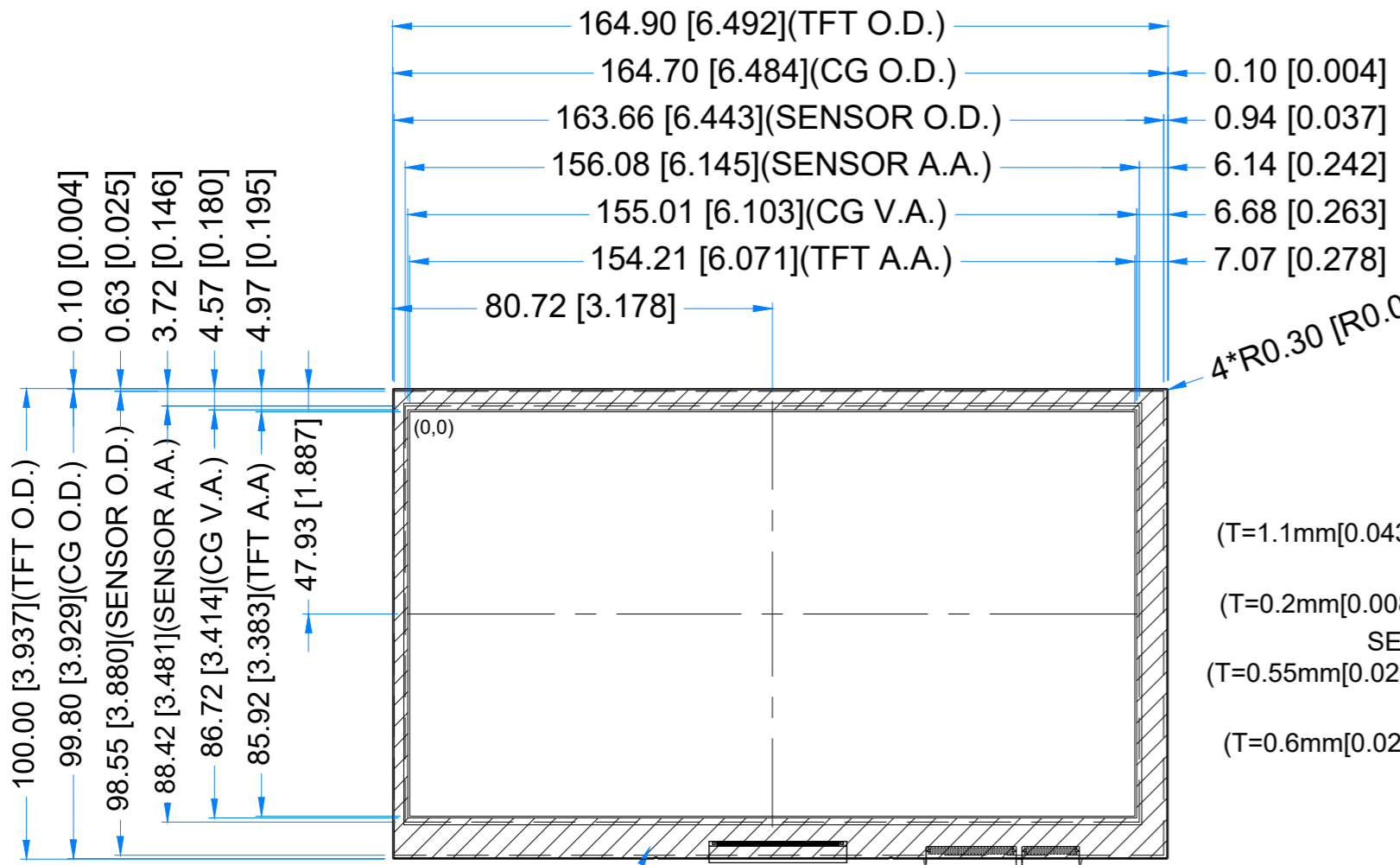


| | | |
|-----------|--------------|------------|
| Revision: | Changes: | Date: |
| 1.0 | Initial Case | 2025.01.30 |

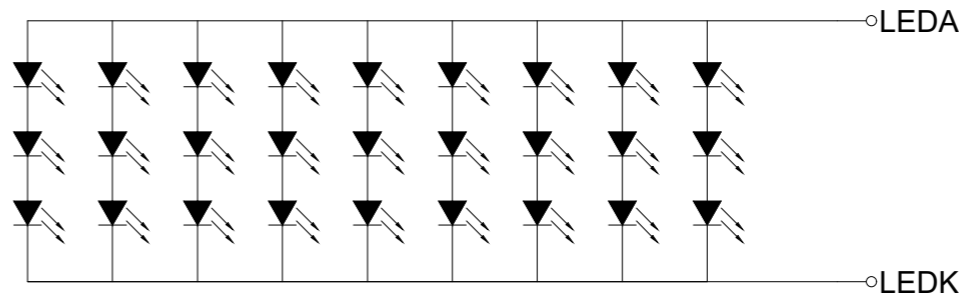
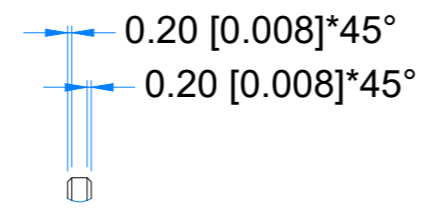


4*R0.30 [R0.012]

LENS
(T=1.1mm[0.043inch])
SCA
(T=0.2mm[0.008inch])
SENSOR
(T=0.55mm[0.022inch])
DST
(T=0.6mm[0.024inch])

BLACK MASK PRINTING
RAL9005

DETAIL A
SCALE 4:1



LED Diagram Circuit

PINOUT ON THE 2ND PAGE

TFT NOTES:
 1. LCD TYPE: TRANSMISSIVE, NORMALLY BLACK, IPS
 2. RESOLUTION: 1024x600
 3. VIEWING ANGLE: FREE
 4. DRIVING IC ON THE BOARD: SN65DSI83ZXHR
 5. INTERFACE: MIPI DSI
 6. OPERATION VOLTAGE: 5.0V

TP NOTES:
 1. TP STRUCTURE: G+G
 2. CG THICKNESS: 1.1mm[0.043inch]
 3. SURFACE HARDNESS: 7H
 4. DRIVER IC: ILI2132A
 5. INTERFACE: I2C

GENERAL NOTES:
 1. MODULE SURFACE LUMINANCE: 800 cd/m²
 2. AIR BONDING
 3. OPERATING TEMPERATURE: -20°C ~ 70°C
 4. STORAGE TEMPERATURE: -30°C ~ 80°C
 5. WITHOUT INDIVIDUAL TOLERANCE:
 ±0.3mm[0.012inch]
 6. RoHS3 COMPLIANT

PN: RVT70HSDNWCA0
 SN:
 DRAWN: M.Suchocki
 CHECKED: M.Wierzbowski
 APPR:



| | | |
|------------|-----------|--|
| 2025.01.30 | 1:1.39 | |
| 2025.01.30 | [mm] | |
| ISO A3 | P. 1 of 1 | |



| J1 CONNECTOR | | | |
|--------------|--------|---------|--------|
| Pin No. | Desc. | Pin No. | Desc. |
| 1 | GND | 18 | BL_PWM |
| 2 | D0_P | 19 | INT |
| 3 | D0_N | 20 | SCL |
| 4 | GND | 21 | SDA |
| 5 | D1_P | 22 | RST |
| 6 | D1_N | 23 | 1.8V |
| 7 | GND | 24 | VREF |
| 8 | CLK_P | 25 | 3.3V |
| 9 | CLK_N | 26 | 5V |
| 10 | GND | 27 | 5V |
| 11 | D2_P | 28 | 5V |
| 12 | D2_N | 29 | 5V |
| 13 | GND | 30 | GND |
| 14 | D3_P | 31 | NC |
| 15 | D3_N | 32 | NC |
| 16 | GND | 33 | NC |
| 17 | PWR_DN | 34 | NC |