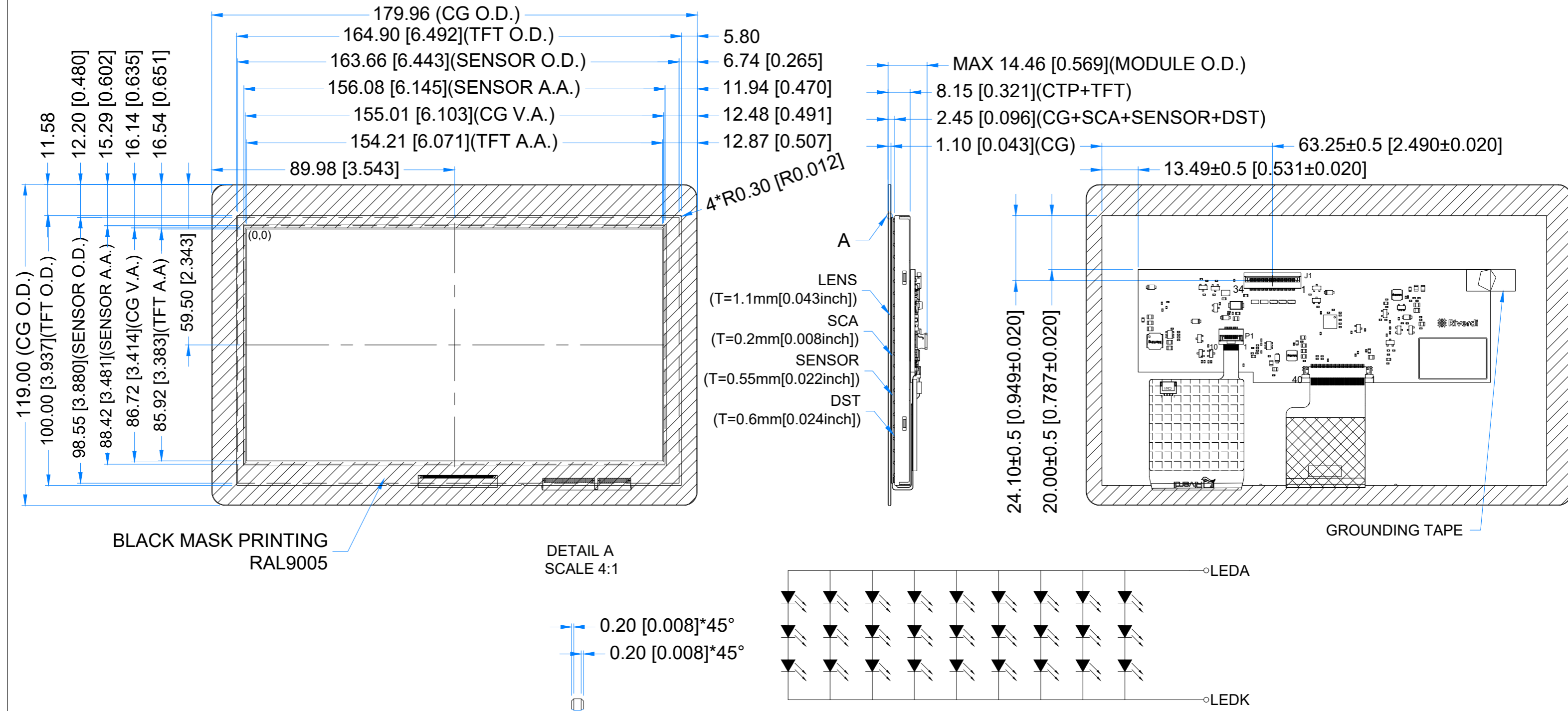


Revision:	Changes:	Date:
1.0	Initial Case	2025.01.30



PINOUT ON THE 2ND PAGE

TFT NOTES:

- LCD TYPE: TRANSMISSIVE, NORMALLY BLACK, IPS
- RESOLUTION: 1024x600
- VIEWING ANGLE: FREE
- DRIVING IC ON THE BOARD: SN65DSI83ZXHR
- INTERFACE: MIPI DSI
- OPERATION VOLTAGE: 5.0V

TP NOTES:

- TP STRUCTURE: G+G
- CG THICKNESS: 1.1mm[0.043inch]
- SURFACE HARDNESS: 7H
- DRIVER IC: ILI2132A
- INTERFACE: I2C

GENERAL NOTES:

- MODULE SURFACE LUMINANCE: 800 cd/m²
- AIR BONDING
- OPERATING TEMPERATURE: -20°C ~ 70°C
- STORAGE TEMPERATURE: -30°C ~ 80°C
- WITHOUT INDIVIDUAL TOLERANCE: ±0.3mm[0.012inch]
- RoHS3 COMPLIANT

PN: RVT70HSDNWC00

SN:

DRAWN: M.Suchocki

CHECKED: M.Wierzbowski

APPR:

2025.01.30	1:1.40	
2025.01.30	[mm]	
ISO A3		P. 1 of 1



J1 CONNECTOR			
Pin No.	Desc.	Pin No.	Desc.
1	GND	18	BL_PWM
2	D0_P	19	INT
3	D0_N	20	SCL
4	GND	21	SDA
5	D1_P	22	RST
6	D1_N	23	1.8V
7	GND	24	VREF
8	CLK_P	25	3.3V
9	CLK_N	26	5V
10	GND	27	5V
11	D2_P	28	5V
12	D2_N	29	5V
13	GND	30	GND
14	D3_P	31	NC
15	D3_N	32	NC
16	GND	33	NC
17	PWR_DN	34	NC