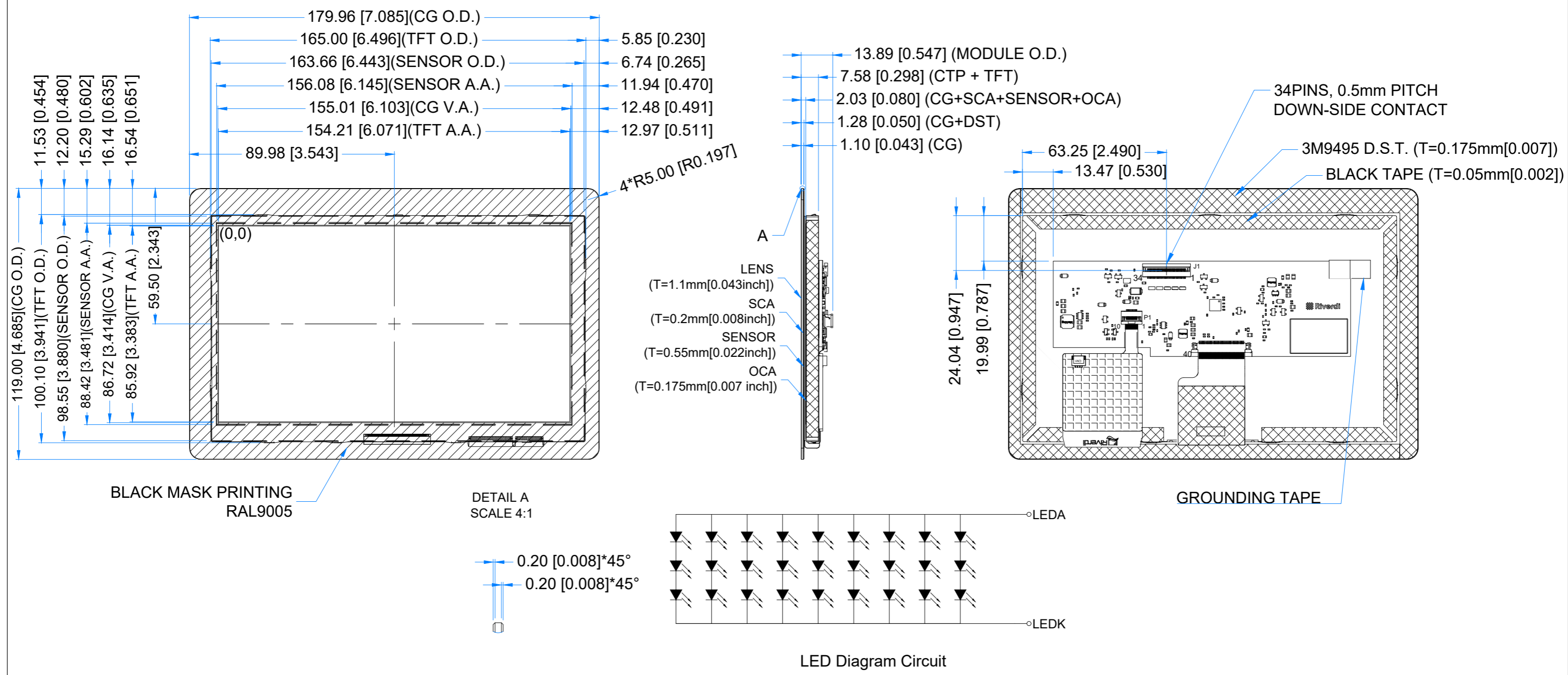


Revision:	Changes:	Date:
1.0	Initial Case	2025.01.30



PINOUT ON THE 2ND PAGE

TFT NOTES: 1. LCD TYPE: TRANSMISSIVE, NORMALLY BLACK, IPS 2. RESOLUTION: 1024x600 3. VIEWING ANGLE: FREE 4. DRIVING IC ON THE BOARD: SN65DSI83ZXHR 5. INTERFACE: MIPI DSI 6. OPERATION VOLTAGE: 5.0V	TP NOTES: 1. TP STRUCTURE: G+G 2. CG THICKNESS: 1.1mm[0.043inch] 3. SURFACE HARDNESS: 7H 4. DRIVER IC: ILI2132A 5. INTERFACE: I2C	GENERAL NOTES: 1. MODULE SURFACE LUMINANCE: 850 cd/m ² 2. OPTICAL BONDING 3. OPERATING TEMPERATURE: -20°C ~ 70°C 4. STORAGE TEMPERATURE: -30°C ~ 80°C 5. WITHOUT INDIVIDUAL TOLERANCE: ±0.3mm[0.012inch] 6. RoHS3 COMPLIANT	PN: RVT70HSDNWC00-B				
			SN:				
			DRAWN: M.Suchocki	2025.01.30		1:1.65	
			CHECKED: M.Wierzbowski	2025.01.30		[mm]	
			APPR:	ISO A3		P. 1 of 1	



J1 CONNECTOR			
Pin No.	Desc.	Pin No.	Desc.
1	GND	18	BL_PWM
2	D0_P	19	INT
3	D0_N	20	SCL
4	GND	21	SDA
5	D1_P	22	RST
6	D1_N	23	1.8V
7	GND	24	VREF
8	CLK_P	25	3.3V
9	CLK_N	26	5V
10	GND	27	5V
11	D2_P	28	5V
12	D2_N	29	5V
13	GND	30	GND
14	D3_P	31	NC
15	D3_N	32	NC
16	GND	33	NC
17	PWR_DN	34	NC