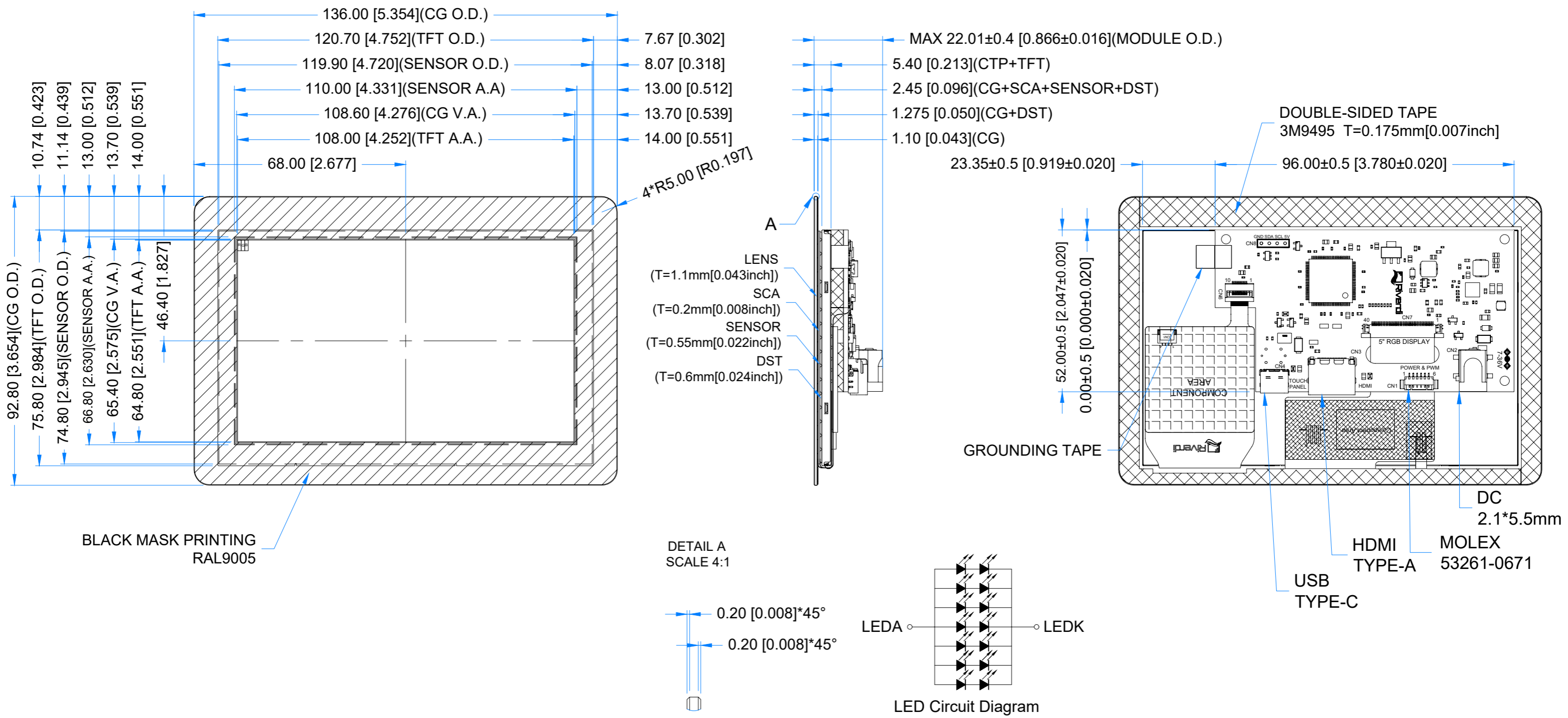


Revision:	Changes:	Date:
1.0	Initial Case	2023.01.19



PINOUT ON THE 2ND PAGE

**LCM NOTES:**

- LCD TYPE: TRANSMISSIVE, NORMALLY BLACK, IPS
- RESOLUTION: 800x480
- VIEWING ANGLE: FREE
- MODULE SURFACE LUMINANCE: 800 cd/m<sup>2</sup>
- CONTROLLER IC OF MAIN BOARD: TFP401APZPR
- VIDEO INTERFACE: HDMI
- POWER SUPPLY: POWER JACK (7.0-36.0V); USB-C.

**TP NOTES:**

- TP STRUCTURE: G+G
- CG THICKNESS: 1.10mm[0.043inch]
- SURFACE HARDNESS: 7H
- DRIVER IC: ILI2132A
- INTERFACE: USB-C

**GENERAL NOTES:**

- AIR BONDING BETWEEN TFT AND CTP
- OPERATING TEMPERATURE: -20°C ~ 70°C
- STORAGE TEMPERATURE: -30°C ~ 80°C
- WITHOUT INDIVIDUAL TOLERANCE: ±0.3mm[0.012inch]
- TOLERANCE OF PCB PLACEMENT: ±0.5mm[0.020inch]
- RoHS3 COMPLIANT

PN: RVT50HQHNWC00			
SN:			
DRAWN: M.Natywa	2023.01.19	1:1.22	
CHECKED: Carol Gao	2023.02.24	[mm]	
APPR:			
	ISO A3	P. 1 of 1	



BACKLIGHT PWM & POWER - CN1			
Pin No.	Desc.	Pin No.	Desc.
1	VDD	2	VDD
3	PWM	4	EN
5	GND	6	GND