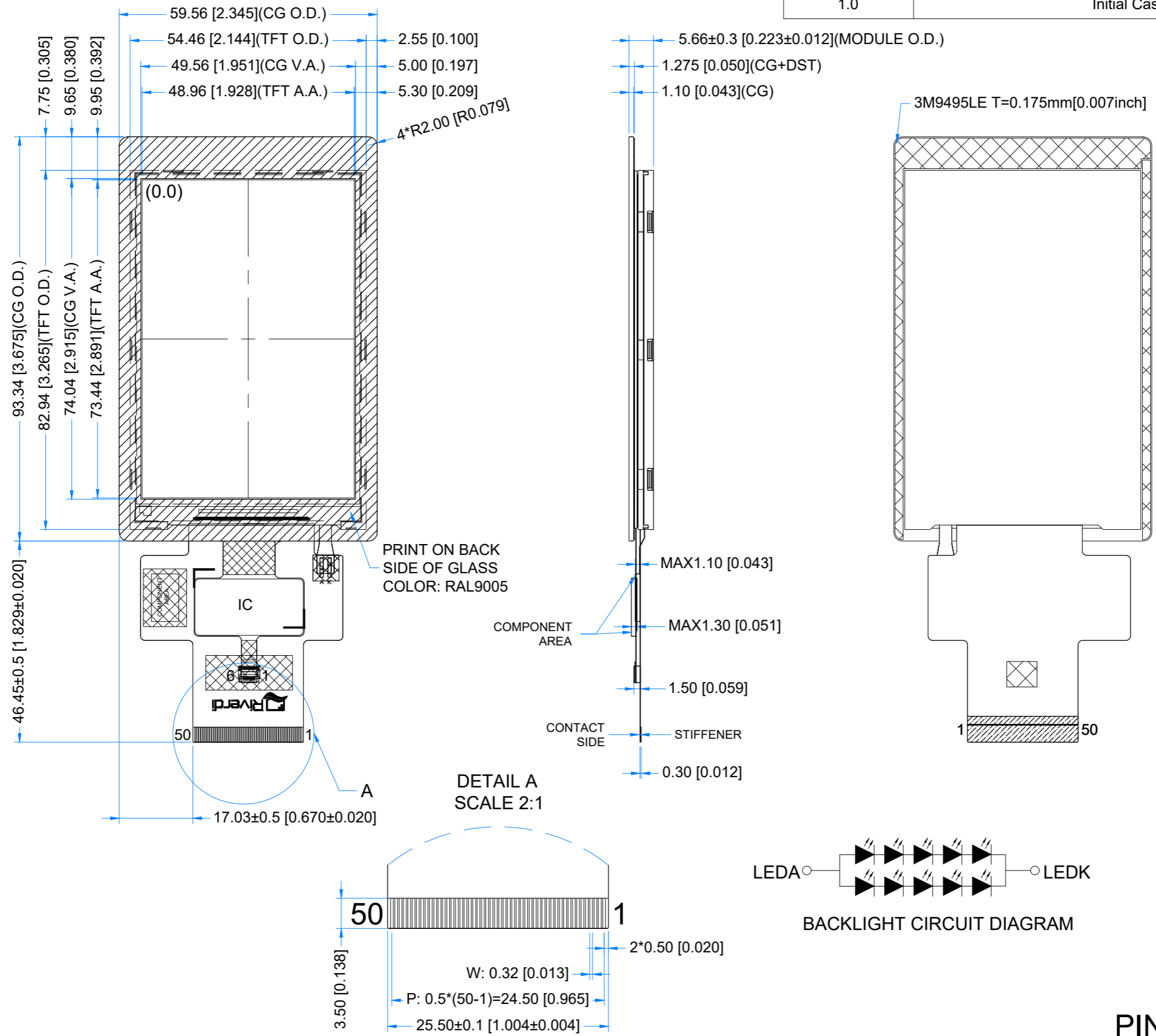


Revision:	Changes:	Date:
1.0	Initial Case	2024.11.19



PINOUT ON THE 2ND PAGE

TFT NOTES:

1. DISPLAY TYPE: TFT, TRANSMISSIVE, RNOMALLY BLACK
2. RESOLUTION: 320*480
3. VIEWING ANGLE: FREE
4. DRIVER IC: ILI9488
5. SURFACE LUMINANCE: 1200cd/m²
6. BACKLIGHT: 10LEDS, V_f=14-16v, I_f=100mA

TP NOTES:

1. TP STRUCTURE: G+G
2. DRIVER IC: ILI2130
3. OPERATING VOLTAGE: 2.8V
4. SURFACE HARDNESS: ≥6H
5. TRANSMITTANCE: ≥80%

GENERAL NOTES:

1. OPERATING TEMPERATURE: -20°C ~ 70°C
2. STORAGE TEMPERATURE: -30°C ~ 80°C
3. WITHOUT INDIVIDUAL TOLERANCE: ±0.2mm
4. RoHS COMPLIANT

PN: RVT35HITNWC00-B

SN:

DRAWN: M.Natywa

CHECKED: M.Wierzbowski

APPR:

2024.11.19	1:1.00	
2024.11.19	[mm]	
ISO A3	P. 1 of 1	



LCD CONNECTOR			
Pin No.	Desc.	Pin No.	Desc.
1	GND	26	DB8
2	VCI	27	DB7
3	IM0	28	DB6
4	IM1	29	DB5
5	IM2	30	DB4
6	RESET	31	DB3
7	VSYNC	32	DB2
8	HSYNC	33	DB1
9	PCLK	34	DB0
10	DE	35	TE
11	DB23	36	SDO
12	DB22	37	SDA
13	DB21	38	RD
14	DB20	39	WR/SCL
15	DB19	40	D/CX
16	DB18	41	CS
17	DB17	42	GND
18	DB16	43	TP_RES
19	DB15	44	TP_INT
20	DB14	45	TP_SDA
21	DB13	46	TP_SCL
22	DB12	47	TP_VDD
23	DB11	48	GND
24	DB10	49	LEDA
25	DB9	50	LEDK