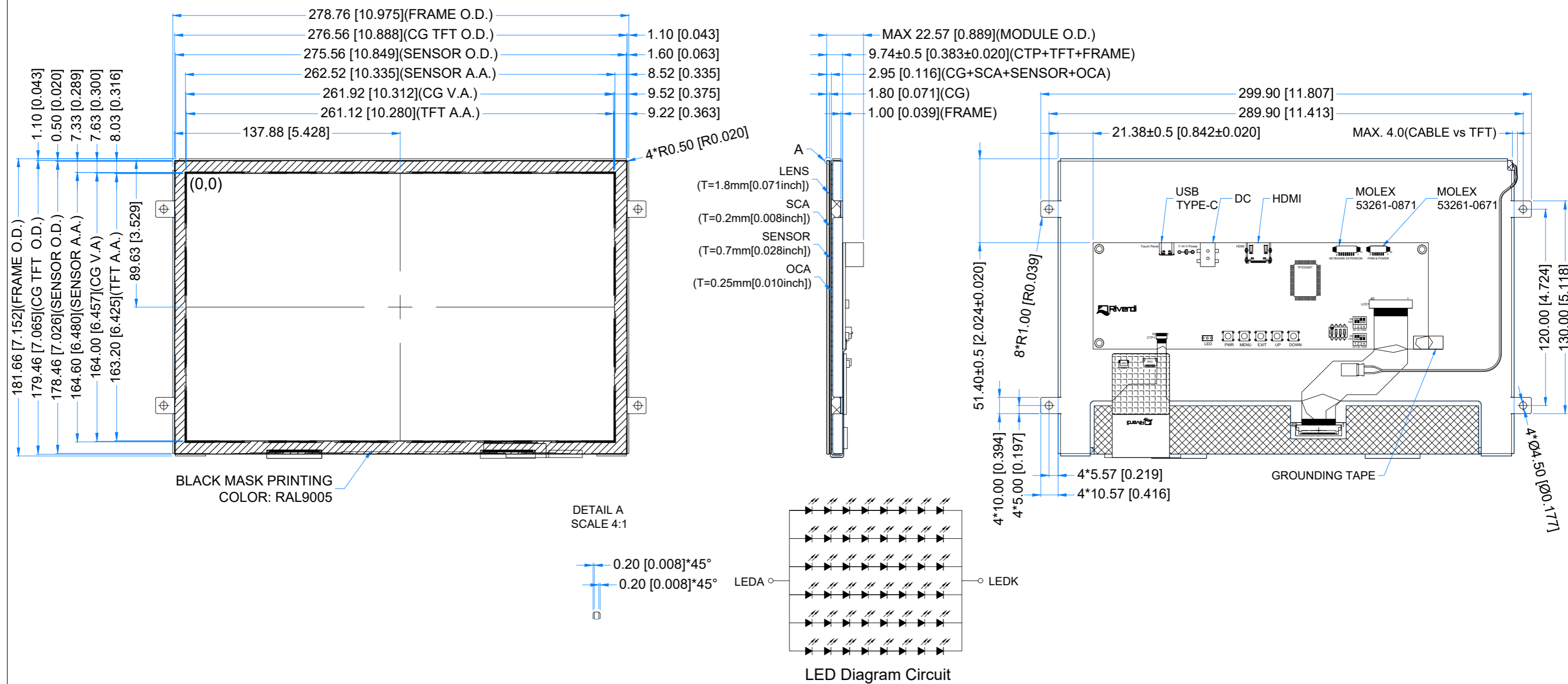


Revision:	Changes:	Date:
1.0	Initial Case	2024.03.27
1.1	Changed the CG VA dimension.	2025.02.03



PINOUT ON THE 2ND PAGE

LCM NOTES:

- LCD TYPE: TRANSMISSIVE, NORMALLY BLACK, IPS
- RESOLUTION: 1280x800
- VIEWING ANGLE: FREE
- CONTROLLER IC OF MAIN BOARD: RTD2556QR
- VIDEO INTERFACE: HDMI
- POWER SUPPLY: POWER JACK (7.0-14.0V)
- MODULE SURFACE LUMINANCE: 850cd/m²

TP NOTES:

- TP STRUCTURE: G+G
- CG THICKNESS: 1.8mm[0.071inch]
- SURFACE HARDNESS: 6H
- DRIVER IC: ILI2511
- INTERFACE: USB-C

GENERAL NOTES:

- OPERATING TEMPERATURE: -20°C ~ 70°C
- STORAGE TEMPERATURE: -30°C ~ 80°C
- WITHOUT INDIVIDUAL TOLERANCE: ±0.3mm[0.012inch]
- RoHS3 COMPLIANT

PN: RVT121HVHFWCA0-B			
SN:			
DRAWN: M.Suchocki	2025.02.03	1:2.31	
CHECKED: M.Wierzbowski	2025.02.03	[mm]	
APPR:		ISO A3	



EXTERNAL KEYBOARD CONNECTOR - J1			
Pin No.	Desc.	Pin No.	Desc.
1	DOWN	2	UP
3	EXIT	4	MENU
5	PWR	6	LED_EN
7	GND	8	KEYBOARD VDD

BACKLIGHT PWM & POWER - J5			
Pin No.	Desc.	Pin No.	Desc.
1	GND	2	GND
3	EN	4	PWM
5	VDD	6	VDD