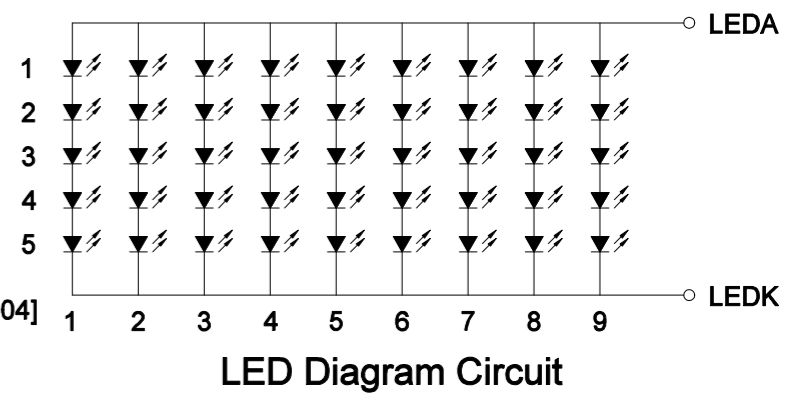
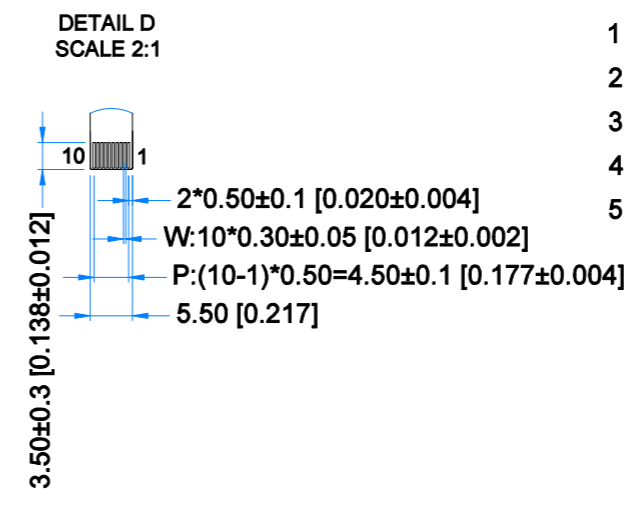
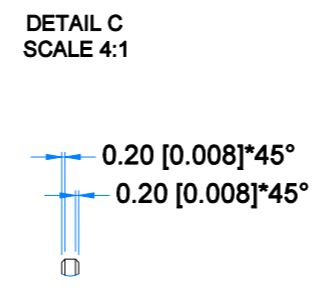
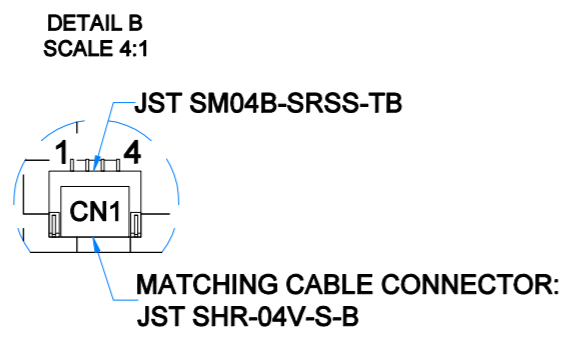
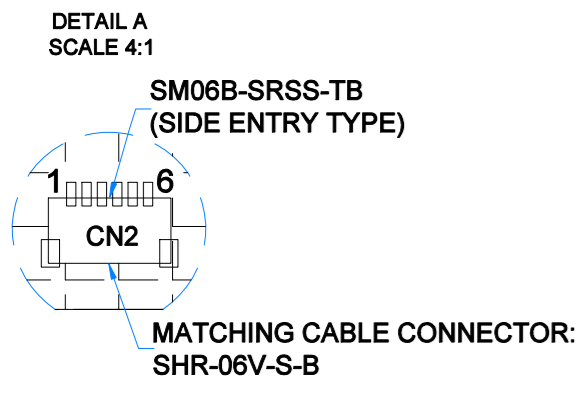
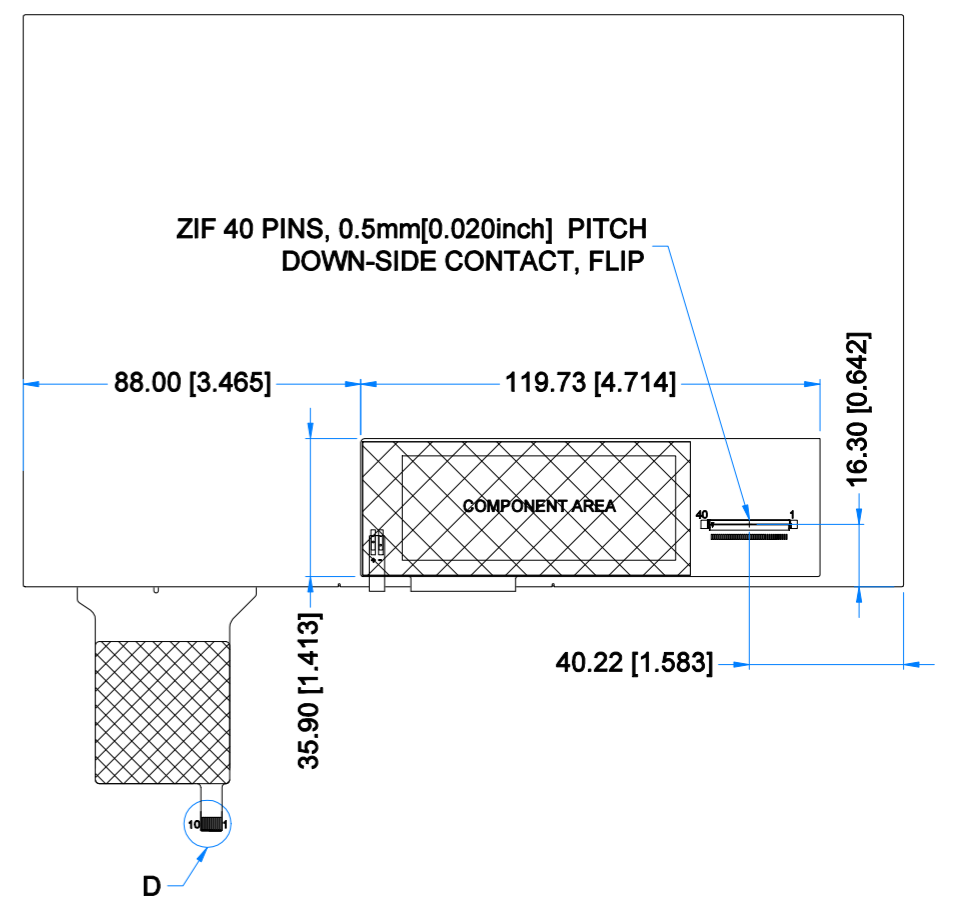
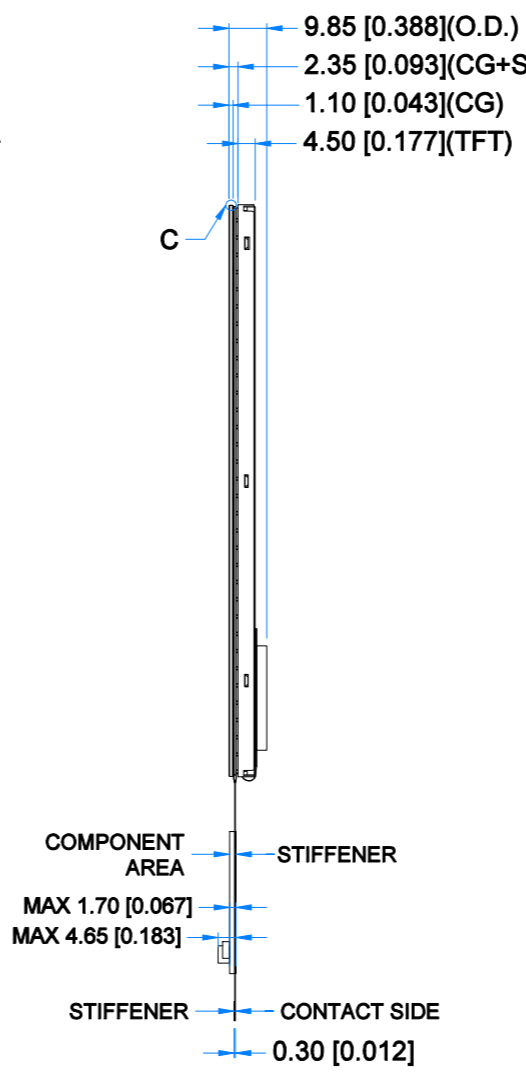
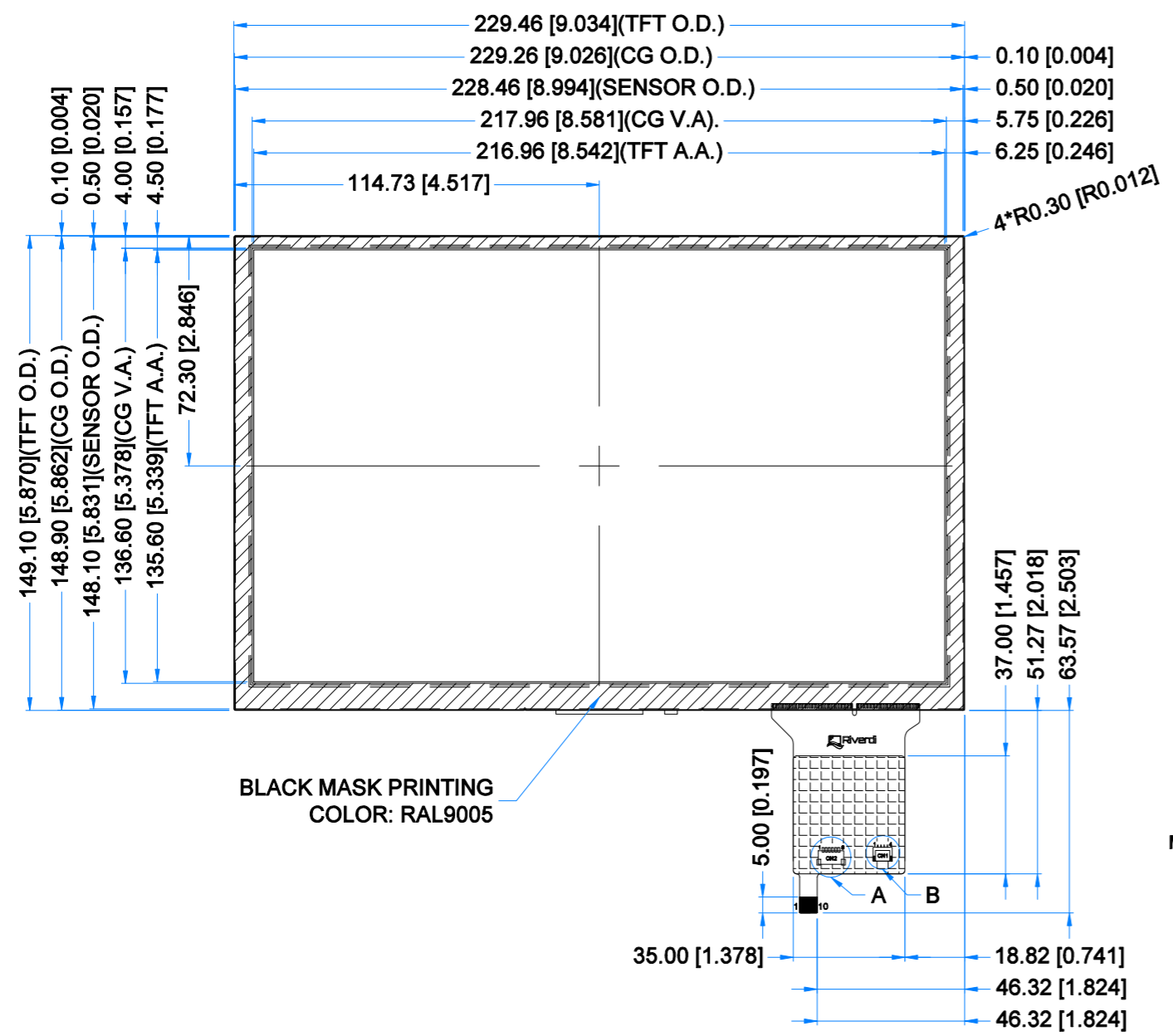


Revision:	Changes:	Date:
1.0	Initial Case	2021.06.22



TFT NOTES:

- LCD TYPE: TRANSMISSIVE, NORMALLY BLACK, IPS
- RESOLUTION: 1280x800
- VIEWING ANGLE: FREE
- DRIVING VOLTAGE: 3.3V
- BACKLIGHT: 45 LEDs, $V_f=16.0V(TYP.)$, $I_f=360mA$
- ZERO BAD PIXEL

TP NOTES:

- TP STRUCTURE: G+G
- CG THICKNESS: 1.10mm
- SURFACE HARDNESS: 7H
- DRIVER IC: ILI2132A
- INTERFACE: USB; I2C; OPTIONAL UART
- OPERATING VOLTAGE: 3.3V(CTP I2C); 5.0V(CTP USB);

GENERAL NOTES:

- MODULE SURFACE LUMINANCE: 800 cd/m²
- OPERATING TEMPERATURE: -20°C ~ 70°C
- STORAGE TEMPERATURE: -30°C ~ 80°C
- WITHOUT INDIVIDUAL TOLERANCE: ±0.3mm[0.012inch]
- RoHS COMPLIANT

PN: RVT101HVLNWCA0
SN:
DRAWN: M.Natywa
CHECKED: K.Brodacka
APPR:

		2021.06.22	1:1.97	
		2021.07.07	[mm]	
		ISO A3	P. 1 of 1	



TFT CONNECTOR			
Pin No.	Desc.	Pin No.	Desc.
1	NC	21	RXIN3+
2	VDD(3.3V)	22	GND
3	VDD(3.3V)	23	NC
4	NC	24	NC
5	NC	25	GND
6	NC	26	NC
7	GND	27	NC
8	RXIN0-	28	NC
9	RXIN0+	29	NC
10	GND	30	GND
11	RXIN1-	31	LED-
12	RXIN1+	32	LED-
13	GND	33	NC
14	RXIN2-	34	NC
15	RXIN2+	35	NC
16	GND	36	NC
17	RXCLK-	37	NC
18	RXCLK+	38	NC
19	GND	39	LED+
20	RXIN3-	40	LED+

TOUCH PANNEL CONNECTOR			
Pin No.	Desc.	Pin No.	Desc.
1	USB_GND	6	I2C_VDD(3.3V)
2	USB_VDD(5.0V)	7	I2C_RST
3	USB_D-	8	I2C_SCL
4	USB_D+	9	I2C_INT
5	I2C_GND	10	I2C_SDA

CN2			
Pin No.	Desc.	Pin No.	Desc.
1	I2C_GND	4	I2C_SCL
2	I2C_VDD(3.3V)	5	I2C_INT
3	I2C_RST	6	I2C_SDA

CN1			
Pin No.	Desc.	Pin No.	Desc.
1	USB_VDD(5.0V)	3	USB_D+
2	USB_D-	4	USB_GND