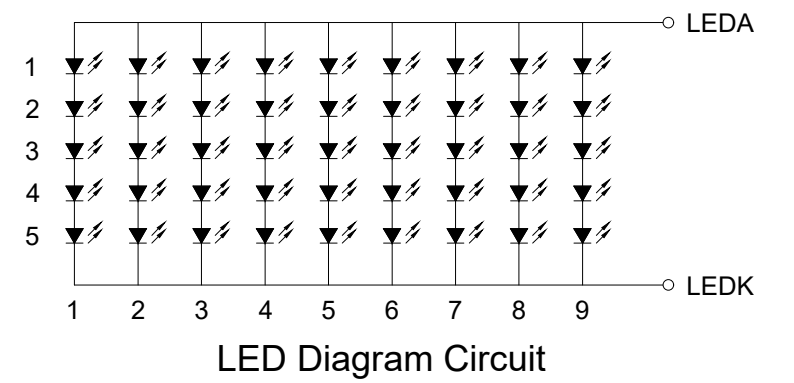
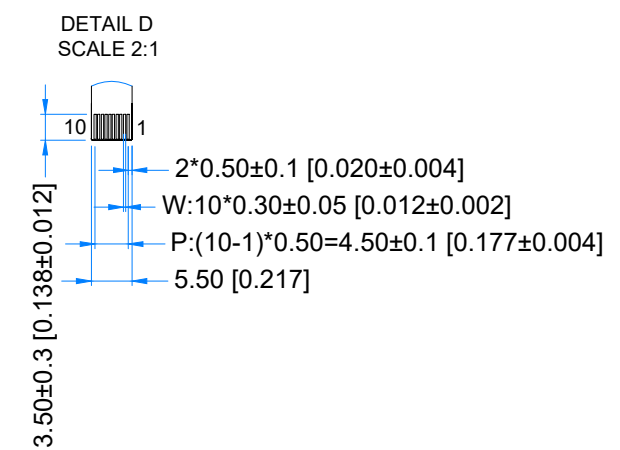
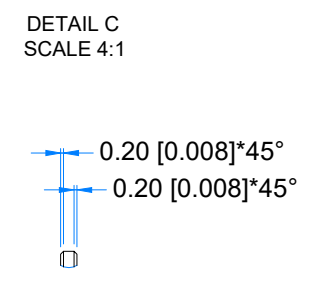
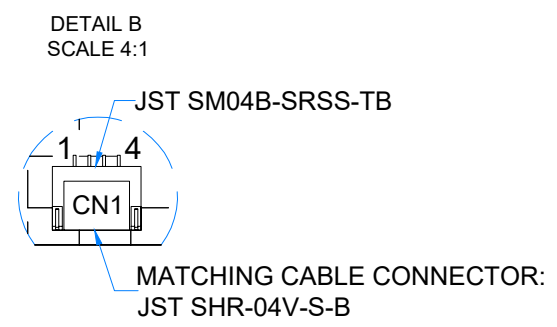
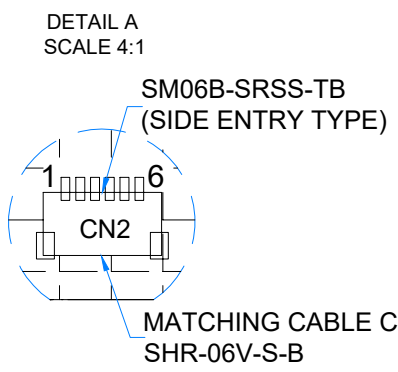
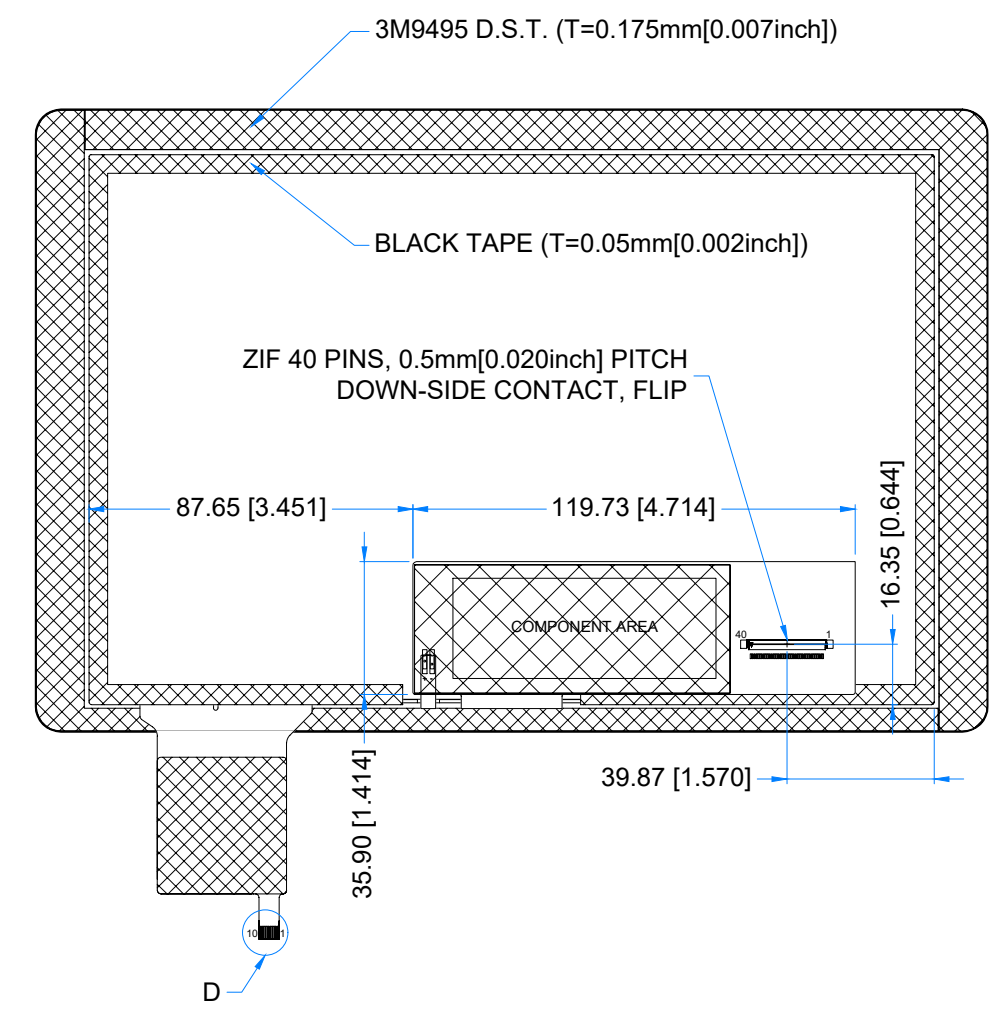
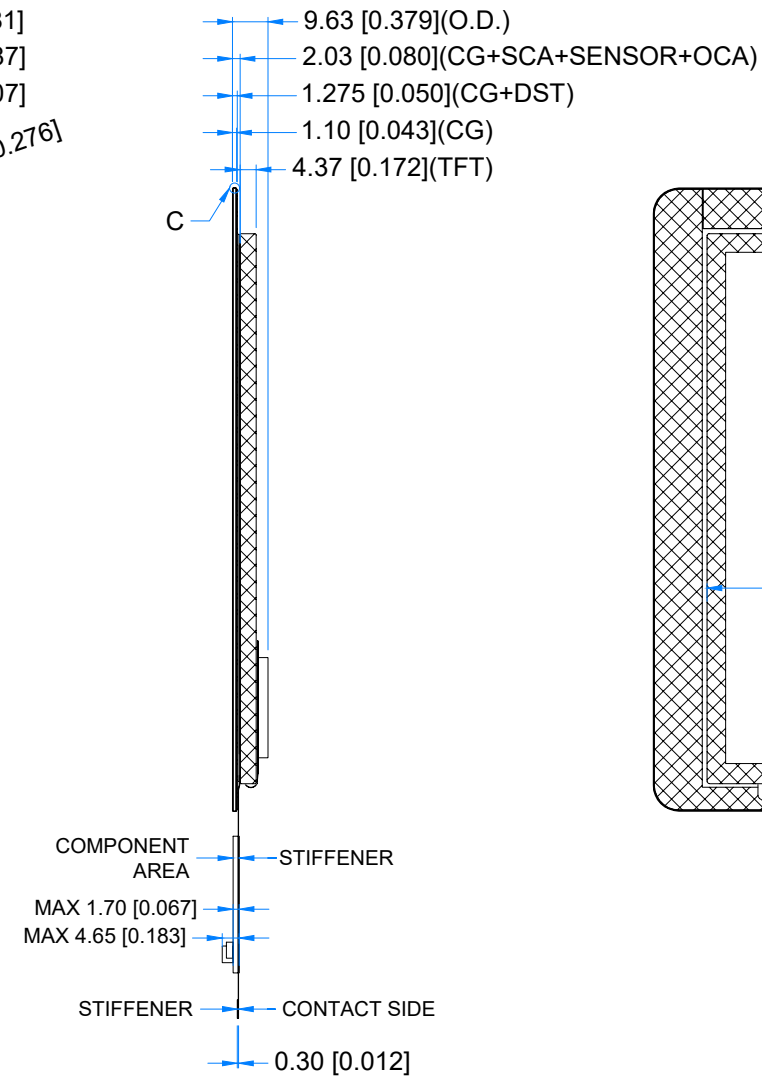
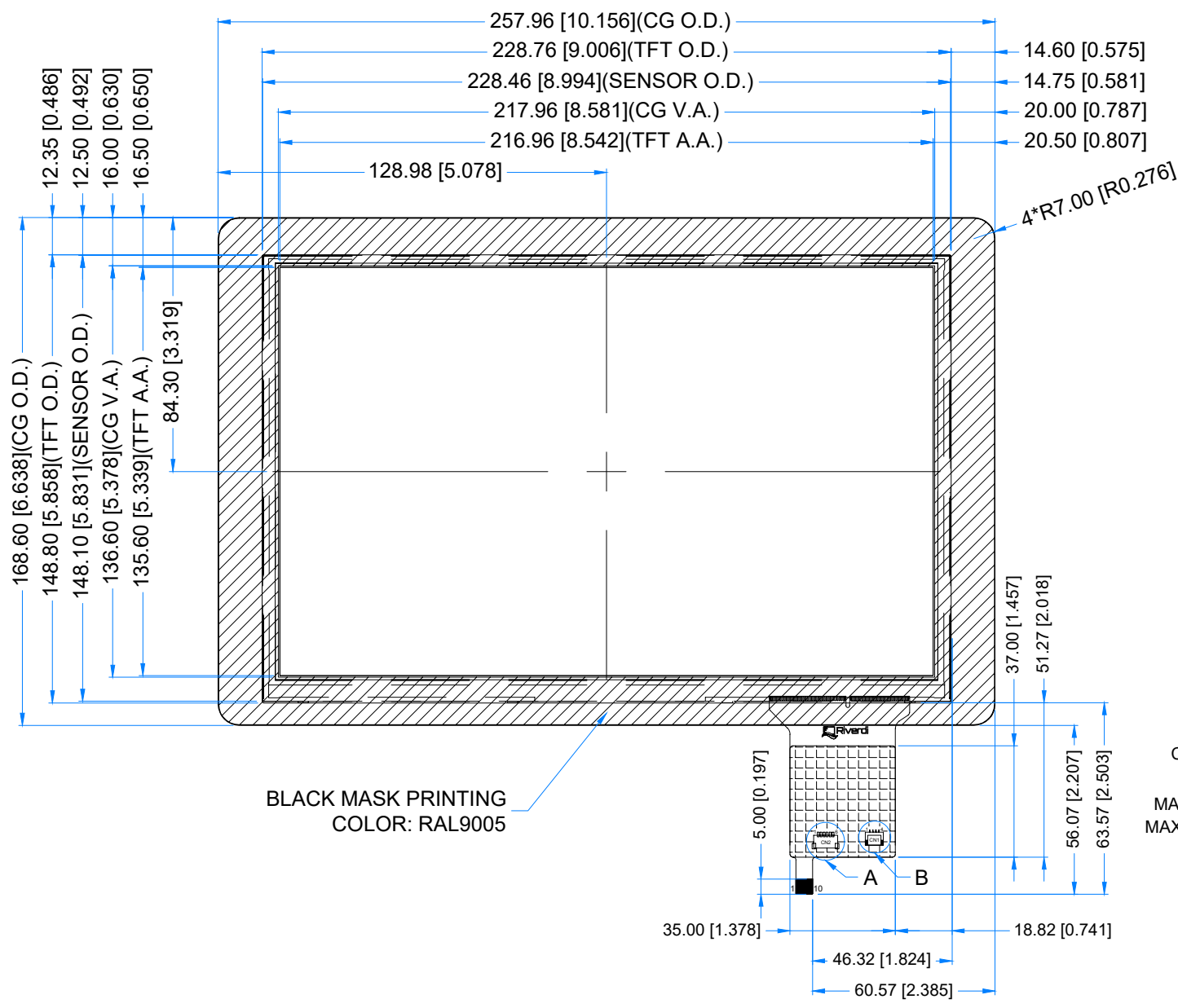


Revision:	Changes:	Date:
1.0	Initial Case	2020.09.08
1.1	Dimensions Overhaul	2021.03.04
1.2	Dimensions Overhaul	2021.06.23
1.3	TFT Pins 5,6,28 Assignment Change	2023.03.19



**TFT NOTES:**  
1. LCD TYPE: TRANSMISSIVE, NORMALLY BLACK, IPS  
2. RESOLUTION: 1280x800  
3. VIEWING ANGLE: FREE  
4. DRIVING VOLTAGE: 3.3V  
5. BACKLIGHT: 45 LEDs,  $V_f=16.0V(TYP.)$ ,  $I_f=360mA$   
6. ZERO BAD PIXEL

**TP NOTES:**  
1. TP STRUCTURE: G+G  
2. CG THICKNESS: 1.10mm  
3. SURFACE HARDNESS: 7H  
4. DRIVER IC: ILI2132A  
5. INTERFACE: USB; I2C; OPTIONAL UART  
6. OPERATING VOLTAGE: 3.3V(CTP I2C); 5.0V(CTP USB);

**GENERAL NOTES:**  
1. MODULE SURFACE LUMINANCE: 850 cd/m<sup>2</sup>  
2. OPTICAL BONDING  
3. OPERATING TEMPERATURE: -20°C ~ 70°C  
4. STORAGE TEMPERATURE: -30°C ~ 80°C  
5. WITHOUT INDIVIDUAL TOLERANCE: ±0.3mm[0.012inch]  
6. RoHS3 COMPLIANT

PN: RVT101HVLNWC00-B  
SN:  
DRAWN: M.Natywa 2023.03.19  
CHECKED: Carol Gao 2023.03.19  
APPR:



2023.03.19 1:2.05  
2023.03.19 [mm]  
ISO A3 P. 1 of 1



TFT CONNECTOR			
Pin No.	Desc.	Pin No.	Desc.
1	NC	21	RXIN3+
2	VDD(3.3V)	22	GND
3	VDD(3.3V)	23	NC
4	NC	24	NC
5	RESET	25	GND
6	STBYB	26	NC
7	GND	27	NC
8	RXIN0-	28	LVBIT
9	RXIN0+	29	NC
10	GND	30	GND
11	RXIN1-	31	LED-
12	RXIN1+	32	LED-
13	GND	33	NC
14	RXIN2-	34	NC
15	RXIN2+	35	NC
16	GND	36	NC
17	RXCLK-	37	NC
18	RXCLK+	38	NC
19	GND	39	LED+
20	RXIN3-	40	LED+

TOUCH PANNEL CONNECTOR			
Pin No.	Desc.	Pin No.	Desc.
1	USB_GND	6	I2C_VDD(3.3V)
2	USB_VDD(5.0V)	7	I2C_RST
3	USB_D-	8	I2C_SCL
4	USB_D+	9	I2C_INT
5	I2C_GND	10	I2C_SDA

CN2			
Pin No.	Desc.	Pin No.	Desc.
1	I2C_GND	4	I2C_SCL
2	I2C_VDD(3.3V)	5	I2C_INT
3	I2C_RST	6	I2C_SDA

CN1			
Pin No.	Desc.	Pin No.	Desc.
1	USB_VDD(5.0V)	3	USB_D+
2	USB_D-	4	USB_GND